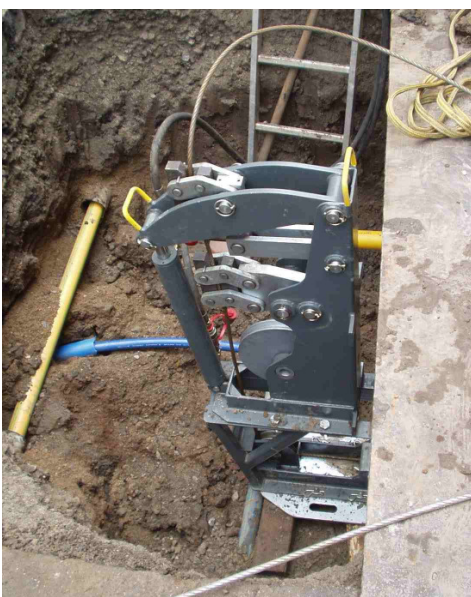


New technology for pipe replacement

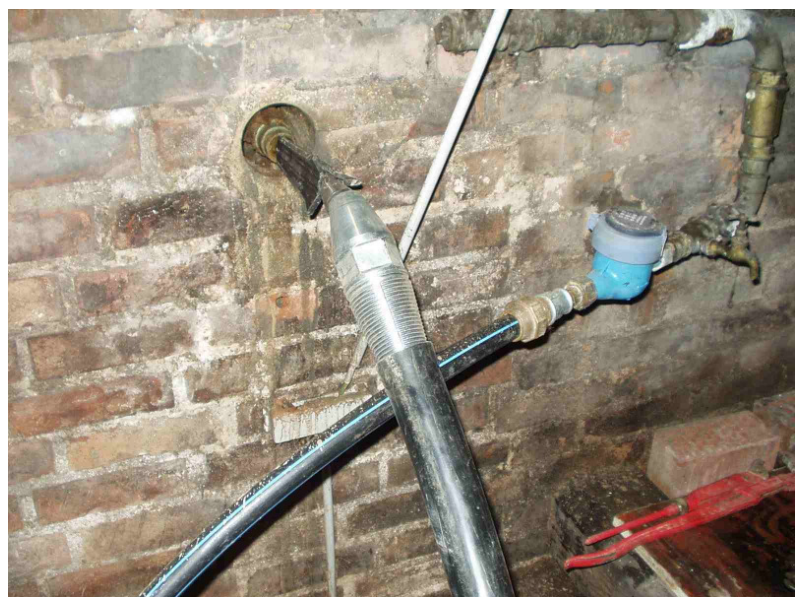
| | |
|---------------------------|----------------------------------|
| City: | Tübingen/Germany |
| Authorities: | Stadtwerke Tübingen |
| Contractor: | Leonhard Weiss/Leonberg-Höfingen |
| Length: | 12 m |
| New pipe to be pulled in: | HDPE pipe OD 63 mm |
| Machine: | TERRA-EXTRACTOR X 100 |
| Old pipe: | Steel pipe ID 50 mm |
| Underground: | Sand, gravel, stones |



The TERRA-EXTRACTOR X 100 is prepared to be lifted into the pit.



The TERRA-EXTRACTOR X 100 is positioned in the pit. The cable is pushed through the old pipe.



The 3-wing cutter and the PE pipe adapter with the HDPE pipe OD 63 mm are assembled in the cellar.

**Cable Puller
TERRA-EXTRACTOR X 100**



Pic. left:

The 3-wing cutter and the PE pipe adapter with the HDPE pipe OD 63 mm enter the bottom frame of the TERRA-EXTRACTOR X 100 after 12 m. Working time: 10 – 15 min.

Pic. right:

The 3-wing cutter and the PE pipe adapter can be disassembled.



Pic. left:

The HDPE pipe OD 63 mm is pulled in.

TERRA AG, Industriestrasse 1, 4805 Brittnau, Switzerland, phone: +41-62-751 24 52, fax: +41-62-751 40 46,
e-mail: terra.ch@bluewin.ch, Internet: www.terra-eu.eu